

## FABRICATED ENGINEERS' VICES - I RANGE

Manufactured from heavy steel plate, case hardened replaceable steel jaws, replaceable nut, corrosion resistant screw and handle, precision machined bearing surface. Available in standard or offset design. Quality fabricated vices at an affordable price suitable for the price conscious trade users and serious DIY.

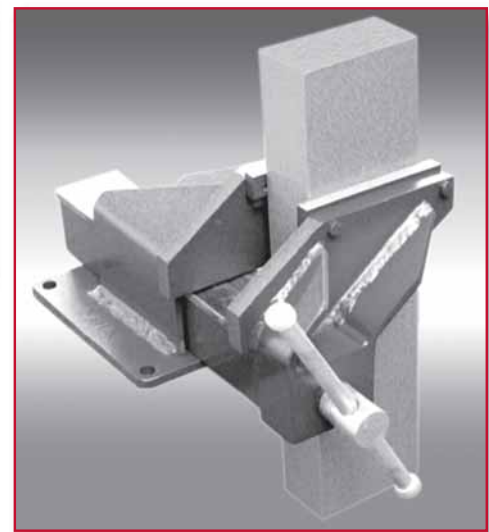
PART NO.	VICE SIZE JAW WIDTH MM	MAX. JAW OPENING MM	TYPE	WT KGS	OVERALL LENGTH (CLOSED) MM	OVERALL WIDTH MM	OVERALL HEIGHT MM
60305	100	115	STANDARD FABRICATED - I RANGE	10	340	150	135
60306	125	145	STANDARD FABRICATED - I RANGE	18	430	180	180
60307	150	175	STANDARD FABRICATED - I RANGE	22	490	200	190
60308	200	200	STANDARD FABRICATED - I RANGE	36	610	200	225
60318	100	115	OFFSET FABRICATED - I RANGE	11	340	185	135
60319	125	125	OFFSET FABRICATED - I RANGE	20	440	240	175
60320	150	175	OFFSET FABRICATED - I RANGE	24	490	280	185
60321	200	225	OFFSET FABRICATED - I RANGE	59	690	375	240



*Standard*



*Offset*



*The offset advantage*

## STAINLESS STEEL FABRICATED ENGINEERS' VICES MARINE GRADE 316

- Designed for all heavy duty work in marine, chemical and specialist environments.
- Manufactured from Marine Grade 316, non magnetic stainless steel which is corrosion resistant
- Comes as Standard or with 'Offset advantage' which allows the user to work on long vertical sections with the full width of the jaws without obstruction from the main body of the vice.
- Replaceable case hardened jaws, with a 'V' notch to hold round objects
- Precision machined bearing surface for smooth operation.
- Also available in Left Hand Offset to enable use of all corners of the workbench or to suit left handed operators



**NEW**

*Standard*



**NEW**

*Offset*

PART NO.	VICE SIZE JAW WIDTH MM	MAX. JAW OPENING MM	TYPE	WT KGS	OVERALL LENGTH (CLOSED) MM	OVERALL WIDTH MM	OVERALL HEIGHT MM
60205-SS	100	115	Standard	10.5	342	150	138
60207-SS	150	175	Standard	22.6	496	200	192
60212-SS	100	115	Offset	11.2	342	188	138
60214 - SS	150	175	Offset	25	496	282	189

